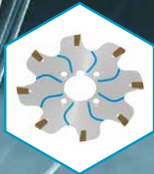


Member IMC Group  
**Ingersoll**  
Cutting Tools



**CUBE<sup>3D</sup>**  
ADDITIVE | TECHNOLOGY


**THE PRINTED FUTURE**  
Your Reliable Partner!



**Maanteraä**  
METALLITEOLLISUUDEN RATKAISUT VUODESTA 1941

# The Printed Future!

## Additive Manufacturing of Cutting Tools

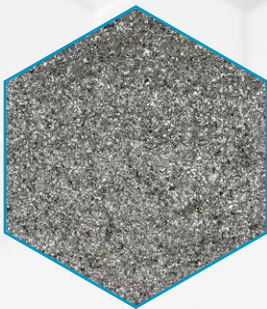
Start into a new dimension of machining with Ingersoll  CUBE<sup>3D</sup>.

With creative Ingersoll engineering and additive manufacturing, we optimize your machining process and make amazing things possible.

Ask your Ingersoll Partner about  CUBE<sup>3D</sup>.

### The Powder

Ingersoll exclusively uses **premium tool steel powder** for additive manufacturing.



### The Process

Precisely controlled lasers melt the powder. The material produced complies to the Ingersoll standard in terms of density, strength and composition.



### The Additive Tool

The additive manufacturing process opens up completely new possibilities for optimizing the function and economy of cutting tools.



# Representative Workpieces

in additive design

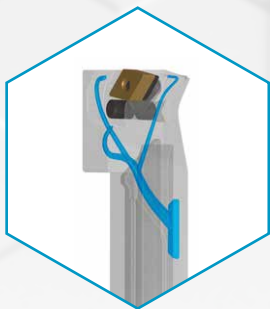
## Drills

Optimized cross-sections and chip gullets can be achieved through a customizable coolant channel design - while gaining more rigid tool bodies along the way!



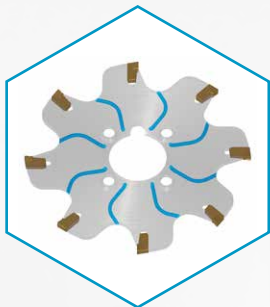
## Turning Tools

**CUBE<sup>3D</sup>** is ideal for sophisticated special turning tools with high-pressure cooling.



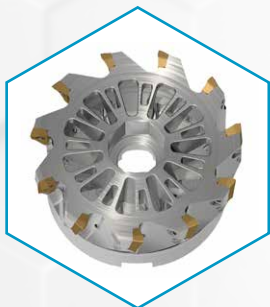
## Slitting Tools

Applications such as slot milling, cut-off or groove turning that require cutting tools to be narrow or thin are excellent opportunities for Ingersoll's additive capabilities. **CUBE<sup>3D</sup>**.



## Milling Tools

Light-weight cutting tools are often required for manual handling, tool changer requirements and smaller machine spindles. Additive manufacturing offers many innovative solutions for light-weight designs.




# Optimized Coolant Supply

## Tailor-Made Solutions

A tailor-made coolant supply can play **the** key role in machining.

Among other benefits, it has an impact on:

- Tool Life
- Chip Control and Chip Evacuation
- Metal Removal Rate
- Process Reliability

Ingersoll  **CUBE** will find the optimal solution for you, too!



Optimized  
Coolant Supply

Light-weight  
Design



# Our Offering


Dimensions, Lot Sizes and Delivery Times

## Maximum Dimensions

We can offer you additive tools up to a diameter of 325 mm and a length of up to 335 mm.



## Minimum Quantity: 1 piece!

We would like to convince you of the performance of Ingersoll  **CUBE<sup>3D</sup>**. Therefore we gladly offer you order quantities of just a single additive tool.



## Delivery Time

If it needs to be quick, we can also offer the lead times you know from **Ingersoll Extreme**.\*



**CUBE<sup>3D</sup>**  
ADDITIVE | TECHNOLOGY

\*Inquiries are checked individually. The delivery times specified in the offer apply.

## **Ingersoll Werkzeuge GmbH**

Kalteiche-Ring 21-25  
35708 Haiger, Germany  
Telefon: +49 2773 742-0  
Telefax: +49 2773 742-812  
E-Mail: [info@ingersoll-imc.de](mailto:info@ingersoll-imc.de)  
Internet: [www.ingersoll-imc.de](http://www.ingersoll-imc.de)

## **Niederlassung Süd:**

Florianstraße 13-17  
71665 Vaihingen-Horrheim, Germany  
Telefon: +49 7042 8316-0  
Telefax: +49 7042 8316-26  
E-Mail: [horrheim@ingersoll-imc.de](mailto:horrheim@ingersoll-imc.de)



[www.ingersoll-imc.de](http://www.ingersoll-imc.de)