

DOT PEEN

Integrable

Marker units especially designed to be integrated into production lines.

SUPERFAST

Marking areas:

- 50 x 17
- 50 x 25
- 100 x 17
- 100 x 25
- 160 x 17
- 160 x 25



STANDARD

Marking areas:

- 90 x 60
- 150 x 100



DEEP MARK

Marking areas:

- 90 x 60
- 150 x 100
- 72 x 35
- 200 x 35

Portable

Marker units especially designed to mark parts in any zone and position.

SUPERFAST

Marking areas:

- 50 x 17
- 50 x 25
- 100 x 17
- 100 x 25
- 160 x 17
- 160 x 25



STANDARD

Marking areas:

- 90 x 60
- 150 x 100



DEEP MARK

Marking areas:

- 90 x 60
- 150 x 100
- 72 x 35
- 200 x 35

Desktop

Autonomous marker units, especially designed for marking small batches and changing productions.

SUPERFAST

Marking areas:

- 50 x 17
- 50 x 25
- 100 x 17
- 100 x 25
- 160 x 17
- 160 x 25



STANDARD

Marking areas:

- 90 x 60
- 150 x 100



DEEP MARK

Marking areas:

- 90 x 60
- 150 x 100
- 72 x 35
- 200 x 35

Mixed

Autonomous marker units with use flexibility:

SUPERFAST

Marking areas:

- 50 x 17
- 50 x 25
- 100 x 17
- 100 x 25
- 160 x 17
- 160 x 25



STANDARD

Marking areas:

- 90 x 60
- 150 x 100



DEEP MARK

Marking areas:

- 90 x 60
- 150 x 100

SCRIBE

Integrable

Silent marker units, especially designed to be integrated into production lines.

SUPERFAST

Marking areas:

- 75 x 15



STANDARD

Marking areas:

- 60 x 40
- 50 x 30
- 80 x 80



SERVO

Marking areas:

- 120 x 40
- 180 x 45



COUTHsmartbox

Cutting-edge modular control unit, to control COUTH® dot peen and scribe marking units.

User interface, optional, interchangeable, and removable.

With just one HMI, it is possible to manage multiple COUTHsmartbox control units.



COUTH SOFTWARE

COUTHremoteHMI

COUTHremoteHMI is the application for you to access the COUTHsmartbox control unit to control the COUTH® dot-peen and scribe marking units from your tablet, Android, or PC.

COUTHvector

This is the tool to create logotypes with vector definition for the COUTHsmartbox control unit.

COUTHvector allows the user to create their own logotypes quickly and easily, then transfer them to the COUTHsmartbox control unit, saving them in the memory for application.

COUTHmonitor

This is the desktop application that allows the user to remotely access COUTHsmartbox control units for monitoring.

COUTHedit

This is a graphic tool to create and edit marking files for the COUTHsmartbox control unit.

COUTHlink

gsdml file, making communication between the PLC and the COUTHsmartbox control unit possible by using the proprietary bus Profinet.

LASER MAX

COUTH®
LASER **MAX**

The most versatile laser engraving



Created to easily adapt to multiple marking needs, providing on-demand manufacture based on unitary marking.

LASER PRO

COUTH® The high-performance laser
LASER **PRO**



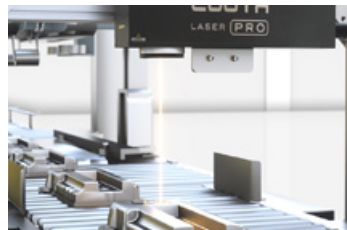
Created to meet high-productivity marking needs.

Manufactured solely with the highest-quality components.

MARK ON THE FLY

Dynamic marking system to be used while parts are in movement.

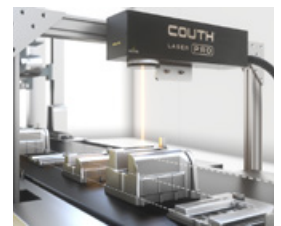
The perfect solution to be integrated onto production lines, maximising the system's power and speed.



AUTOFOCUS

This system automatically adjusts the focal point and requires no additional adjustment.

This laser engraving system reduces process adjustment times.



3D MARKING

This marks different geometries with a piece or pieces whose surfaces have different heights in one same production series, with no need to change the laser's height.

This 3D laser marking function is an ideal option for working on curved pieces like cylinders, slanted pieces, or uneven surfaces. Height compensation ranges up to 120mm.



The 3D COUTHlaser PRO marking head can be easily integrated into any production line.

DEEP MARKING

A process by means of which the laser beam eliminates material to create a non-superficial mark, providing light markings (up to 25 microns) and greater marking required for moulds, seals, etc.



APPLICATIONS



ALUMINIUM



COPPER



ZAMAK



TITANIUM



PLASTIC



STAINLESS STEEL



IMPROVEMENTS FOR PRODUCTIVITY AND EFFICIENCY

With each project we undertake, we conduct a complete diagnosis of each client's marking needs. Because, with a detailed analysis of the project, we can propose the most suitable and efficient solution.

COUTH®'s customised solutions bring improvements that have a direct influence on productivity, efficiency during the manufacturing process, and quality assurance for marking.

Depending on the project, the kind of mark, or the sector in question, COUTH® provides the most suitable solution.

SOLUTIONS FOR INDUSTRY 4.0

The COUTHlaser line is designed to meet the needs of the new industry 4.0 .



TRACEABILITY

The QR and DMC marking make possible internal traceability during the different manufacturing processes and stages.



INFORMATION IN REAL TIME

Obtain real-time information during each operational process on the production line.



MONITORING AND CONTROL

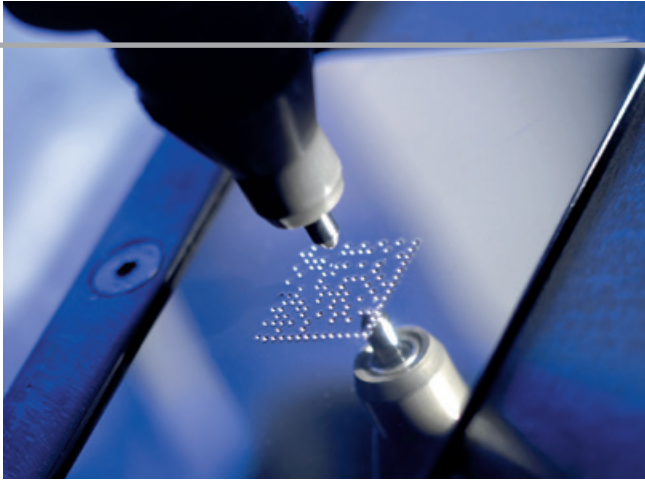
Monitoring and control with a laser system PLC, as well as robots and peripherals.



VERIFICATION

Check verification levels with the artificial vision process. (Contrast, legibility, quality, and life of mark, etc.)

DOT PEEN MARKING



Speed, mark depth, and reliability. The technology in the dot peen marker unit line makes them the **fastest on the market.**

Functionality, productivity, and optimum marking quality.

In addition to these features, we have the COUTH® features, which include robustness and reliability, the result of over half a century of experience in multiple sectors and applications.

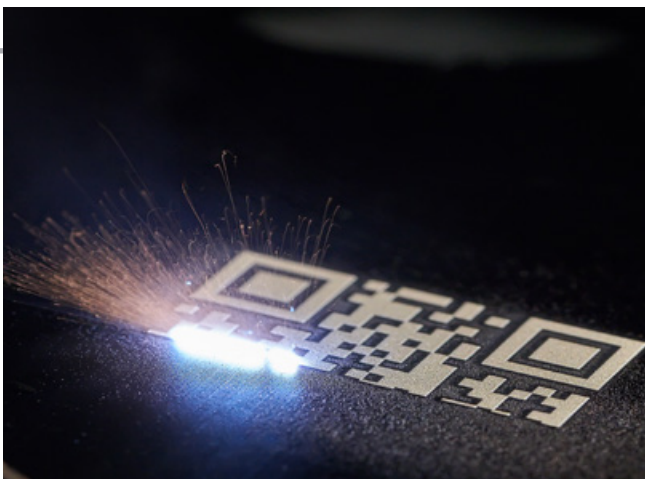
SCRIBE MARKING

When you need to **mark without noise**, scratch marking is the ideal technology. In addition to this feature, we can add the **compact, robust, and reliable design**, making for a delicate, elegant, clear, and profound marking line.

All without sacrificing **easy use, versatility and excellence in the service that characterises COUTH®.**



LASER MARKING



COUTH®'s fibre laser, designed and manufactured with **high-quality components**, provides power at 20W, 30W and 50W. Designed to be **easily integrated** into any industrial setting for laser marking on **all kinds of metals, ceramic materials, and a wide variety of plastics.**

Provides **high marking speed.** The **stability** of its output power provides **high, long-lasting performance over time.**

COUTH®

INDUSTRIAL MARKING SYSTEMS



INDUSTRIAL MARKING SYSTEMS

04.21-ES

COUTH

COUTH®

Zikuñaga 48, Hernani
Gipuzkoa · Spain
T.: +34 943 556 412
marketing@couth.com

SUBSIDIARIES

COUTH® Deutschland

Castroper Hellweg 49
44805 Bochum
T.: +49 234 239 591-0
deutschland@couth.com

COUTH® Mexico

Av Isidoro Sepúlveda
538, Hacienda Santa Fe,
66633 Cd Apodaca, N.L., México
mexico@couth.com

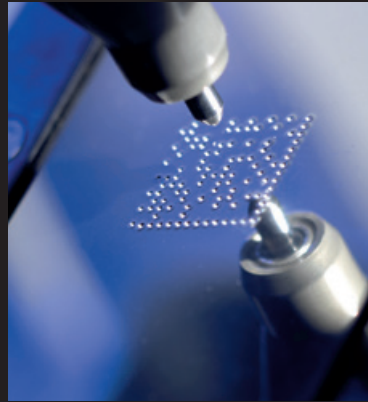
COUTH® China

Room 610, Building 1, No. 26
Qiuyue Road, Pudong New District,
Shanghai, P.R. China
china@couth.com



IFC

DOT PEEN



Automotive



Aeronautics



Railway



Oil&Gas



Steel Industry

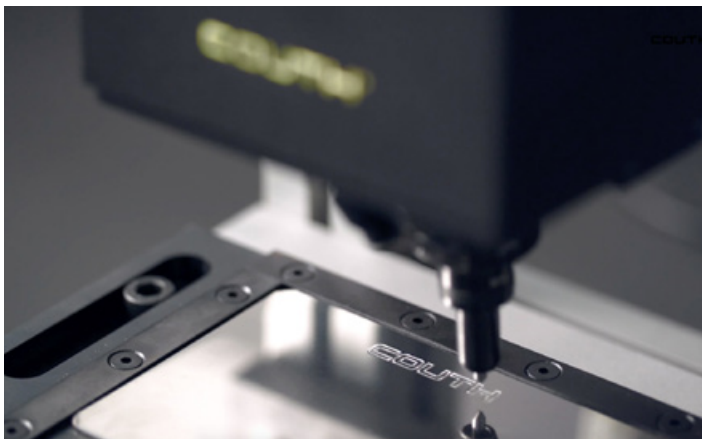


SCRIBE



LASER





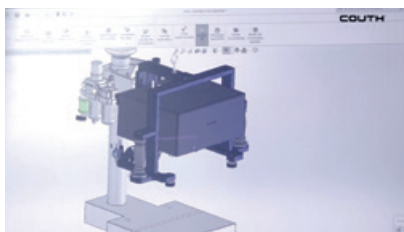
**THE INDUSTRIAL
MARKING
SPECIALIST**

MARKED BY INNOVATION

At COUTH®, we understand that innovation goes beyond the product. It also includes the service and processes to create value for the clients and users. We incorporate innovation as a guideline for general conduct, systematising the search for new opportunities based on market knowledge and, especially, the relationship with the user.

Our line has different configurations for different marking surfaces and depths, depending on the sector, material, and/or application.

As specialists in marking technologies, we can custom design and manufacture special equipment based on each client or user's techniques and needs.



A NEW GENERATION OF MARKING MACHINES



Productivity guarantee



High connectivity



Easy-to-use



Global technical service